

Whole Building Assessment Initiative

Anita Hagspiel, WBA Program Manager

Denise Rouleau, Rouleau Consulting

nationalgrid

The power of action.™

National Grid

<http://thinksmartthinkgreen.com>

<https://www.nationalgridus.com/masselectric/business/energyeff/energyeff.asp>

Electricity

- [Massachusetts](#)
- [Nantucket](#)
- [New Hampshire](#)
- [New York](#)
- [Rhode Island](#)

Natural Gas

- [Massachusetts](#)
- [New Hampshire](#)
- New York
- [Rhode Island](#)

Electric New Construction Incentives (Design 2000plus)

Design 2000plus offers technical assistance and financial incentives to large commercial and industrial customers who are building new facilities, replacing failed equipment or undergoing major renovations.

Incentives of up to 75% of the additional cost for efficiency upgrades are available.

- ◆ Lighting & Controls
- ◆ HVAC Systems
- ◆ Motors
- ◆ Custom Projects
- ◆ Compressed Air
- ◆ Variable Speed Drives

Electric Existing Facility Incentives (Energy Initiative)

We offer technical assistance and incentives to help you purchase and install the energy efficient equipment and systems for your facility.

incentives of up to 45% of the project cost are available.

- ◆ Lighting & Controls
- ◆ HVAC Systems
- ◆ Motors
- ◆ Custom Projects
- ◆ Compressed Air
- ◆ Variable Speed Drives

Electric Services

Technical Assistance—Engineering and support services available to assist you in getting projects underway.

Turnkey Services—Authorized, qualified vendors to help you identify and install your energy efficient opportunities.

Commissioning—A quality control process to ensure that your heating, cooling, and other mechanical systems work efficiently together to save energy and reduce your operating costs.

Lamp and Ballast Recycling—Provides recycling for older lighting lamp and ballast containing toxic PCBs subject to regulations.

Buyers Alliance—Lighting equipment discounts on quality lighting energy efficient products.

Financing—Designed to help assist you with funding for qualifying energy efficiency projects without disrupting your budget.

Gas Efficiency For Your Business

Vary by state (\$2.00/therm saved in NY,NH could go to \$2.25/therm, \$1.00-2.00/therm saved in MA, \$1.50/therm saved in RI)

Natural Gas Heating

Natural Gas Hot Water

Prescriptive Controls

Windows and Insulation

Kitchen Equipment

- Steamers
- Fryers
- Convection Ovens

Engineering Studies

Gas Efficiency For Your Business

Economic Redevelopment

Custom Projects

- Combined Heat and Power
- Combustion Controls
- Solar Program

Training Opportunities

- Steam System Efficiency Training
- Advanced Buildings TM
- Building Operator Certification
- Compressed Air Challenge Seminars

Whole Building Assessment Initiative Overview

WBA –assists commercial and municipal customers to improve the energy performance of their building and to maintain that efficiency over time.

The Initiative helps customers to:

- 1) assess a building's energy performance (all fuels) ,
- 2) Identify cost-effective energy upgrades & utility incentives,
- 3) Tie into the ENERGY STAR program,
- 4) Develop an action plan, and
- 5) Undertake training & educational campaigns



Comprehensive Building Assessment

Assessing the energy performance of the entire building allows for the development of a comprehensive, intergraded solution that leverages all available efficiency opportunities.



A Comprehensive Plan Provides the Opportunity to:

- **Take advantage of synergies across systems (e.g. replacing lighting can reduce the HVAC load)**
- **Opportunity to go deeper –obtain greater energy savings**
- **Bundle energy measures together to get a good overall project payback**
- **Help to determine where you put resources**
- **Provide organizational direction to achieve a more significant longer-term energy savings goal**
- **Rally support across the organization --top level management, facility and occupants.**

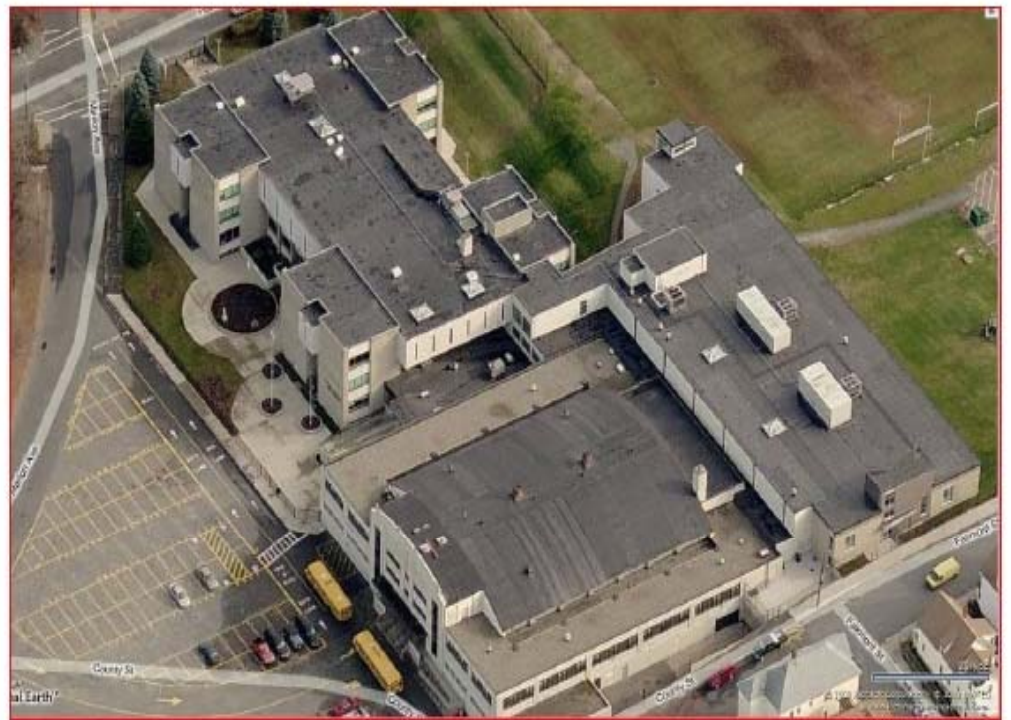
WBA Eligibility Criteria

- **National Grid commercial or municipal customer**
- **One building per customer**
- **The building:**
 - Has electric energy use of 200 kW or greater
 - Is at least 75% occupied
- **Knowledgeable, motivated, and available building staff**
- **Owner commits to the project via signed Memorandum of Understanding (MOU)**
 - Provides an overview of the process
 - Agrees to continue to benchmark the energy use of the building over a year
 - Agrees to implement low-cost/no-cost measures

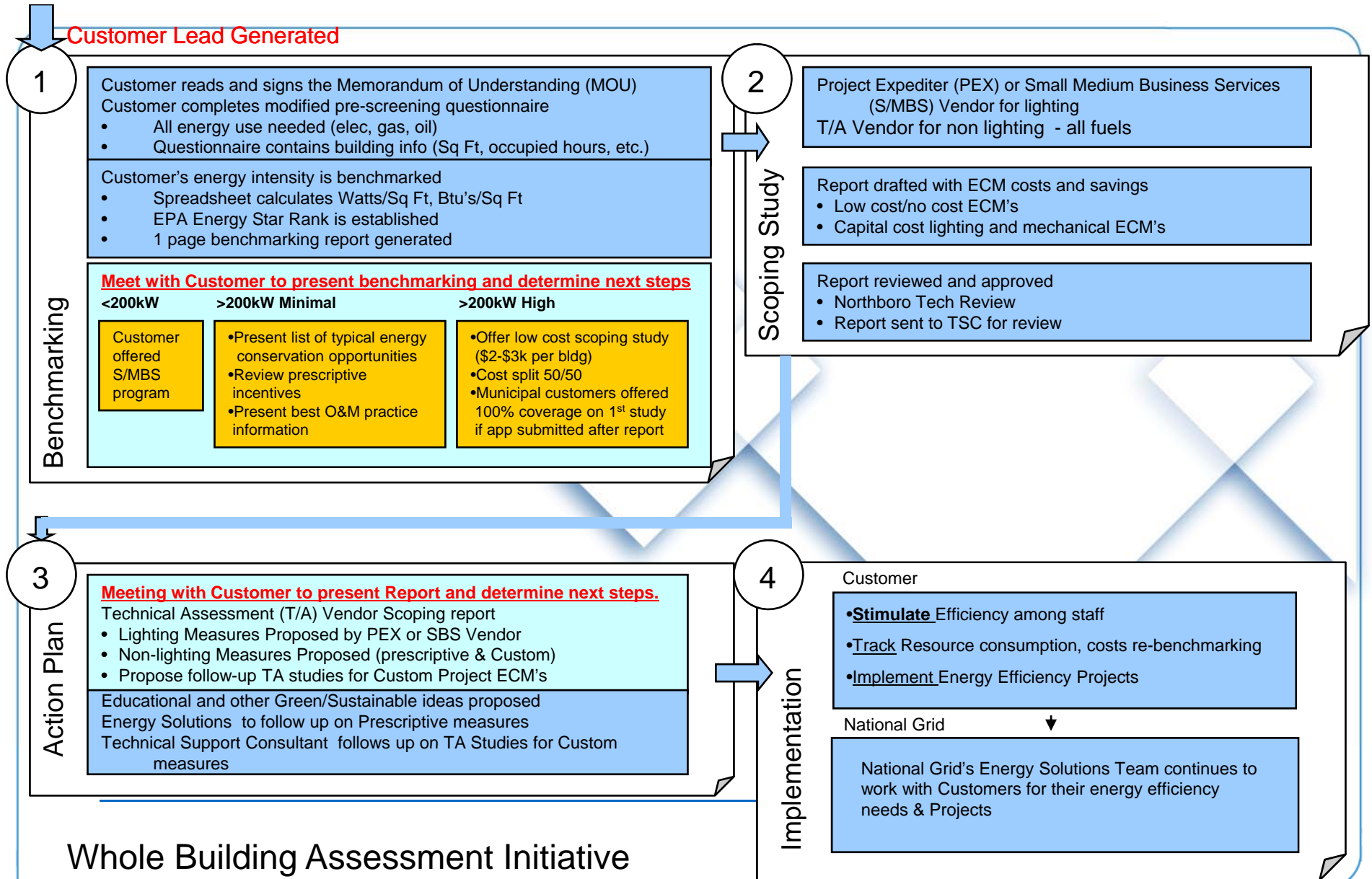
Cost

Split report cost 50/50

- For municipal customers the report fee will be waived if the customer moves forward with an energy-efficiency project within a year.



Customer Lead Generated



Whole Building Assessment Initiative

nationalgrid

The power of action.™

O&M Training & Occupant Education

- **Benchmarking & Low-cost/No-cost Workshops**

- 3 (spring/fall and a municipal focus)
- coordinated with NSTAR and Cape Light Compact

- **Building Operator Certification**

- Will provide greater incentives for WBA customers
- 2 course specifically for municipals being developed



- **“Power to Save” Campaign**



- Currently piloting this turnkey education campaign for elementary grades

- **“How Sweet It Is” Campaign**

- High school (13 years and older) /commercial occupants education campaign
 - Compact lighting offer
 - Energy Star “Change the World” pledge drive
 - Fund raising opportunity



nationalgrid
The power of action.™

For More Information on WBA

Go to our website at:

www.nationalgridus.com

or

www.thinksmarththinkgreen.com

Anita Hagspiel

Anita.Hagspiel@us.ngrid.com

Or

Denise Rouleau

Deniserouleau@comcast.net